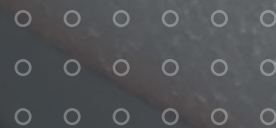


SeeSnake®



Camera Spring Installation



Introduction

This guide explains how to remove and install the spring on a SeeSnake camera reel. Removing the spring may be needed for service, troubleshooting, or to inspect components inside the spring.

To access the spring, you will first need to remove the camera head.

Contents

Removing the Camera Spring	Page 3
Installing the Camera Spring	Page 4

Tools & Materials

- SeeSnake Spanner Wrench

Safety Symbols

NOTICE

NOTICE indicates information that relates to the protection of property.

Removing the Camera Spring

Step 1

With the camera head removed, use the spanner wrench to unscrew the termination end of the spring.



Step 2

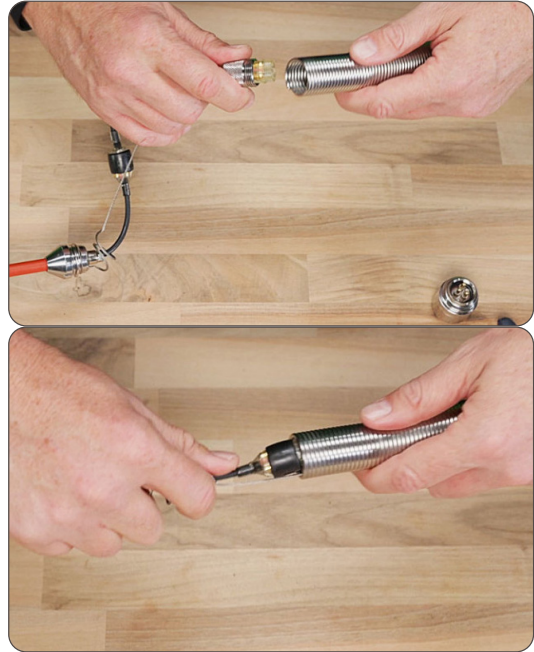
Once the spring is disengaged, carefully slide the spring off the termination and transmitter.



Installing the Camera Spring

Step 1

Orient the spring with the tight coils towards the termination and feed the wires through.



Step 2

Thread the spring back onto the rear spring shell until it is flush with the rear spring shell, making sure to stop when the end of the spring is right against the rear spring shell.

NOTICE

Do not over tighten the spring.



SeeSnake Factory Service

Repair:

+1 (858) 244-6689

Product Support:

+1 (888) 477-5339

3777 Ruffin Road
San Diego, CA 92123-1813